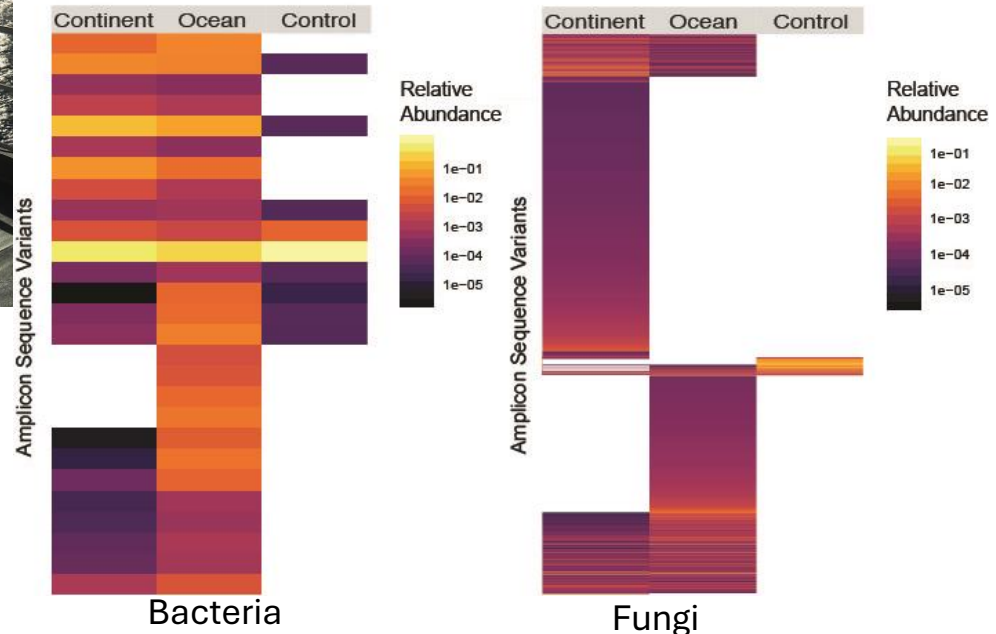
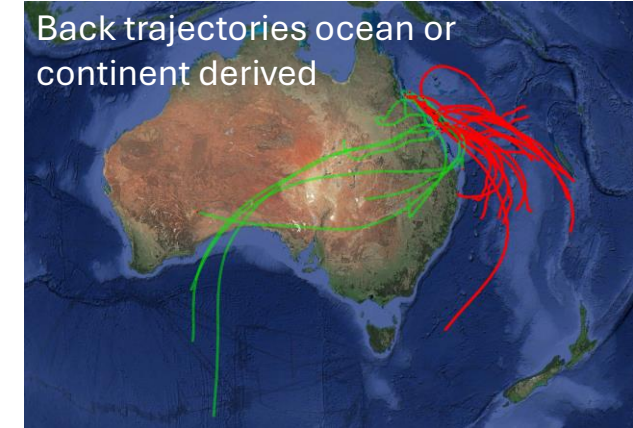
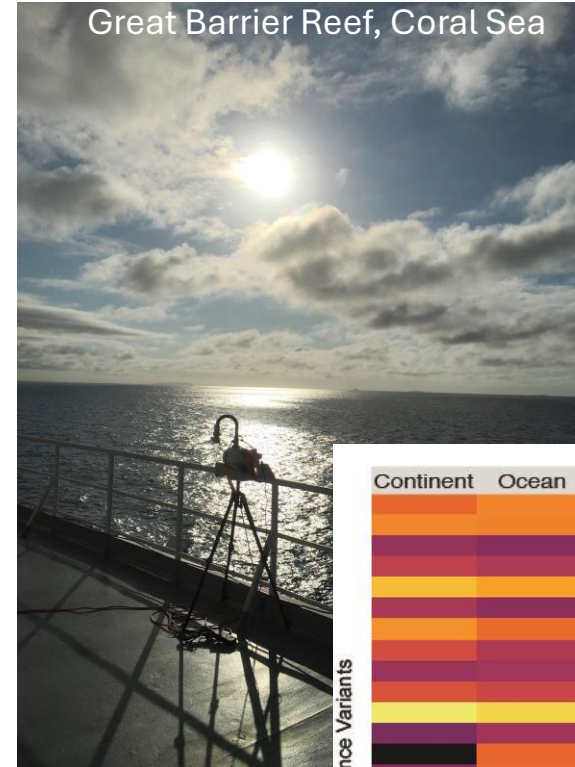
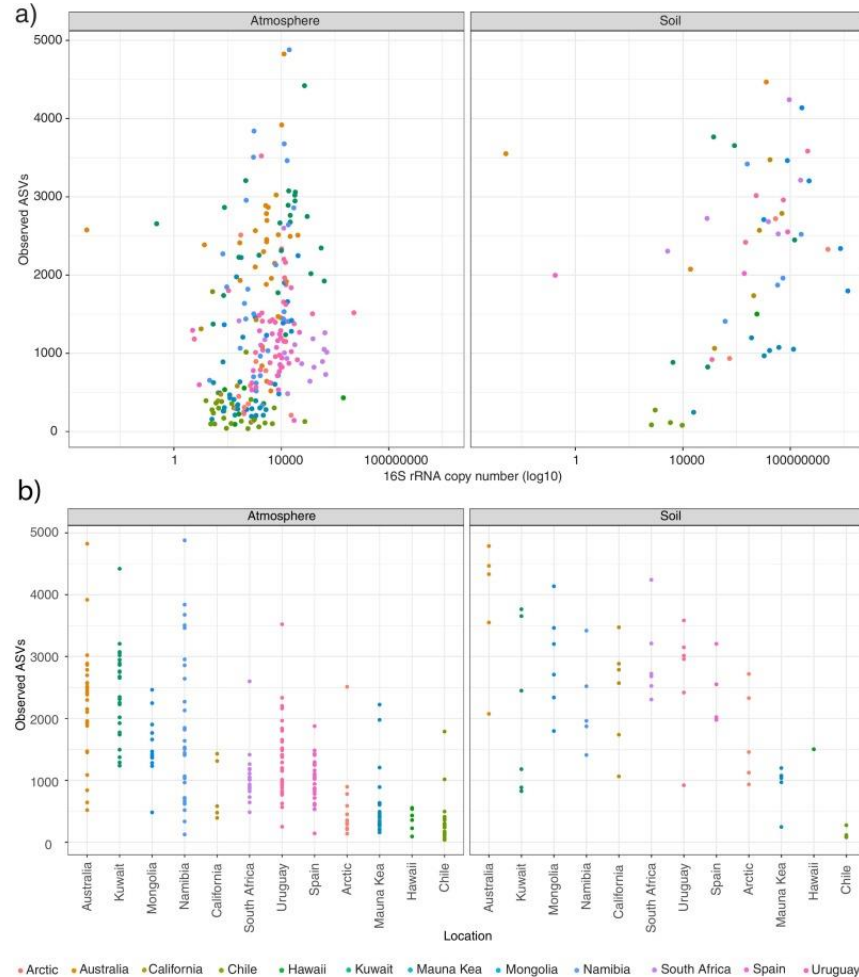


Deciphering the Atmospheric Microbiome

Steve Archer, AgResearch

Concentration (top) Richness (bottom)



<https://doi.org/10.1016/j.scitotenv.2023.162137>

<https://doi.org/10.1038/s41396-019-0555-0>

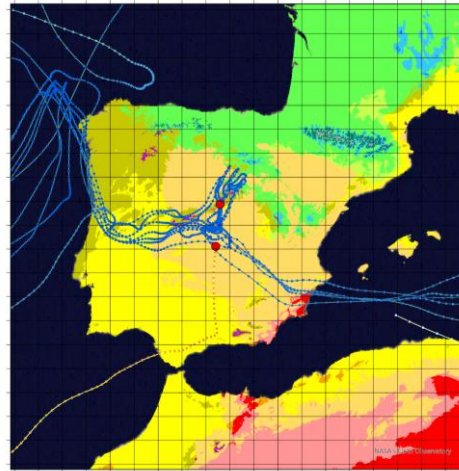
Now to make things more complicated – recruitment sources



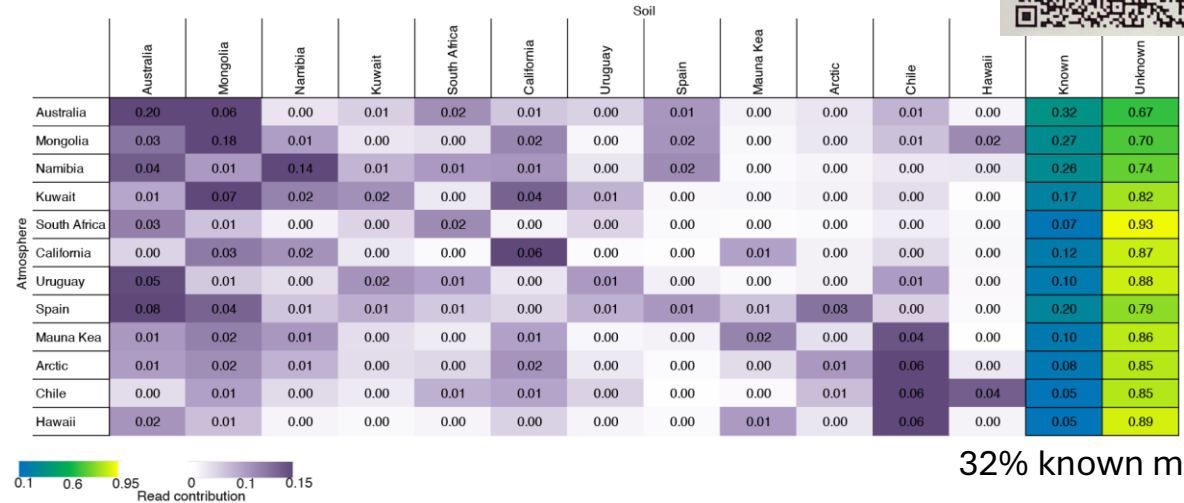
Anthropogenic



Climatic zones



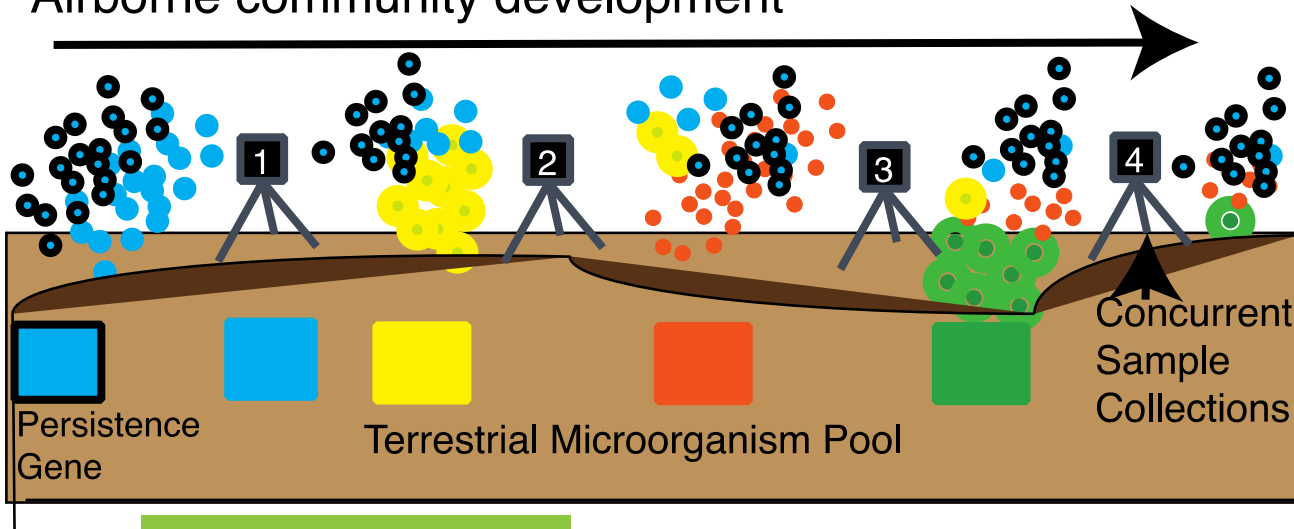
FEAST Analysis Soils/air



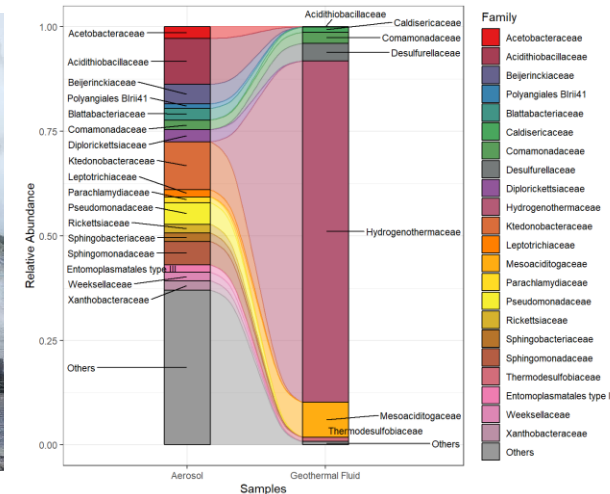
32% known max

<https://doi.org/10.1016/j.scitotenv.2023.162137>

Airborne community development



16S Structure



Marsden - Stuck at home: Why is a novel heat-loving bacterium only found here?